



# WILO TOP S Submittal

Top S 1.5 x 70 Three Phase Series

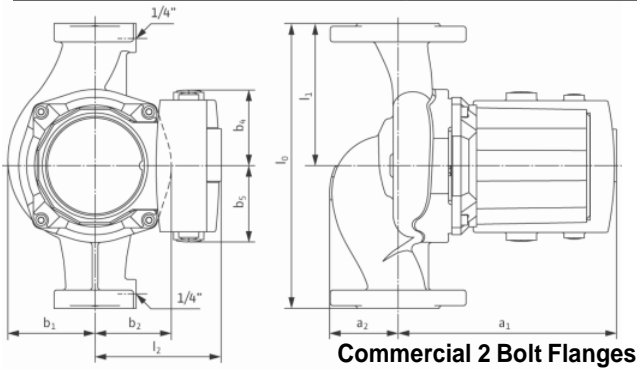


Pumpen Intelligenz.

<b>Project:</b>	
<b>Engineer:</b>	
<b>Contractor:</b>	
<b>Submitted By:</b>	<b>Date:</b>
<b>Approved By:</b>	<b>Date:</b>

Tag #	Model #	Flow	Head	Volt	Phase	Comments
	TOP S 1.5 X 70				3	
	TOP S 1.5 X 70				3	

Details	Max Hp	Pipe Size	l0	l1	l2	a1	a2	b1	b2	b4	b6	Weight
Imperial	1 1/2 Hp	1 1/2"	10	5	5 1/8	10 7/8	2 1/8	3 7/8	3 3/8	2 3/4	2 3/4	48.1 lbs
Metric	1100 Watt	40 mm	254	127	130	277	54	86	86	70	70	21.8 kg



Speed	RPM	Max Watts	Amps 208/230 V	460 V	575 V
Max	3410	1505	5.3	2.6	2.1
Min	3050	1125	3.5	1.7	1.4

140 deg F (60 C)	194 deg F (90 C)	<b>Min Inlet Pressure</b>
1.8 PSI ( 12 kpa)	7.3 PSI (50 kpa)	

### Operating Limits

Max Temp 14 to 248 Deg F (- 10 to 120 Deg C)  
 Max Ambient Temp 104 Deg F (40 Deg C)  
 Max Working Pressure 145 PSI (10 Bar)

### Materials of Construction

Impeller Polypropylene (50% Glass Filled)  
 Shaft Stainless Steel (X40 Cr13)  
 Bearing Metal Impregnated Carbon  
 Volute Cast Iron (Closed Systems)  
 Cataphoresis Coated

